

User Manual

Biofunctional Prosthetic System Resin-base Injector

Thank you for using this product. In order to use the product correctly, please read the product information carefully before use. Please keep the user manual for reference when necessary.

Product Introduction

This product is suitable for denture processing plants, mainly used for resin die casting after wax removal of denture embedding.



Product Parameters

Voltage	220 V
Electric current	3.9A(MAX)
Power	850W(MAX)
Max Temp	110 °C
Weight	18Kg
Size(mm)	320*410*470
Pressure	0.6-0.8MPa

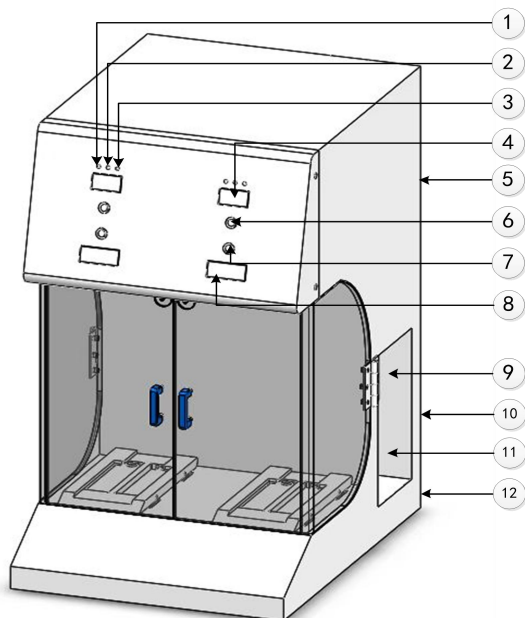
Human Machine Interface

This equipment is equipped with 2 sets of independent control systems, each of which has an independent display module and key module.

The key module of this system consists of two keys. The upper key (execution) is used to realize the execution function, and the lower key (reset) is used to realize the cancellation execution function. In the use mode, long press the Cancel button to enter the setting mode. Increase the setting value by executing the key cycle, switch the setting object by revoking the key, and automatically return to the use mode if there is no key for 5 seconds.

Note: this device is compatible with a variety of capsules, corresponding to three sets of heating procedures respectively. Users need to choose the appropriate procedure in the setting

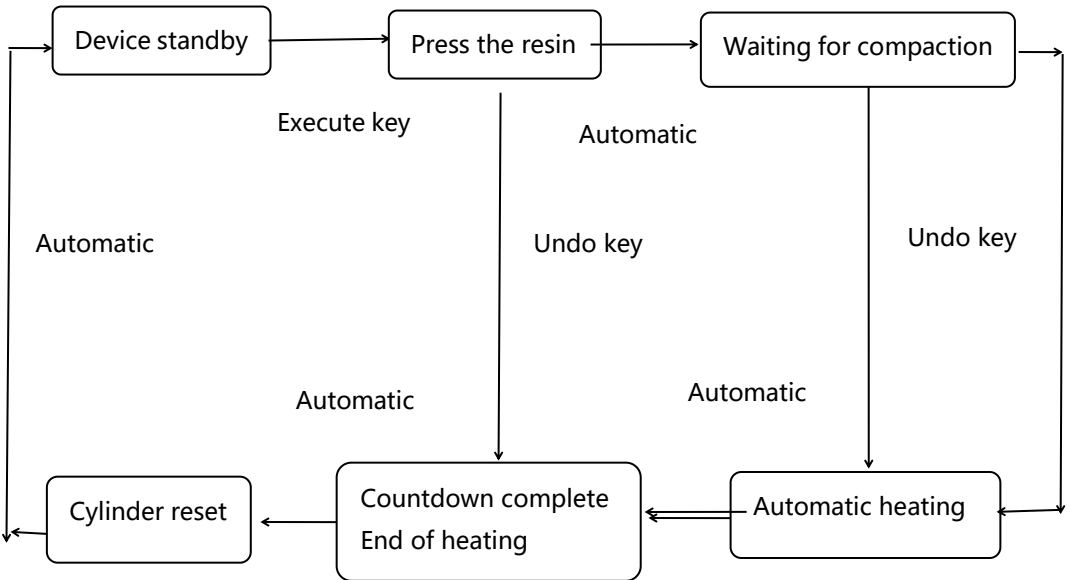
The pressure gauge panel (Figure No. 5) shows the cylinder pressure.



- | | |
|-------------------------------------------|-------------------------------|
| (1) P0 indicator light (ordinary hot gel) | (2) P1 indicator light (BPS) |
| P2 indicator light (no broken glue) | (4) Running status Nixie tube |
| (5) Computer fan (back) | (6) Execute key |
| (7) Cancel button | (8) Time display Nixie tube |
| (9) Pressure gauge | (10) Inlet connector (back) |
| (11) Pressure regulating valve | (12) Power socket (back) |

This equipment is equipped with two groups of independent control units, each of which works independently. The working and adjusting methods are the same. Due to the length of the air supply pipeline, the pressure of each group will be slightly different, which has been adjusted before leaving the factory.

Operation process



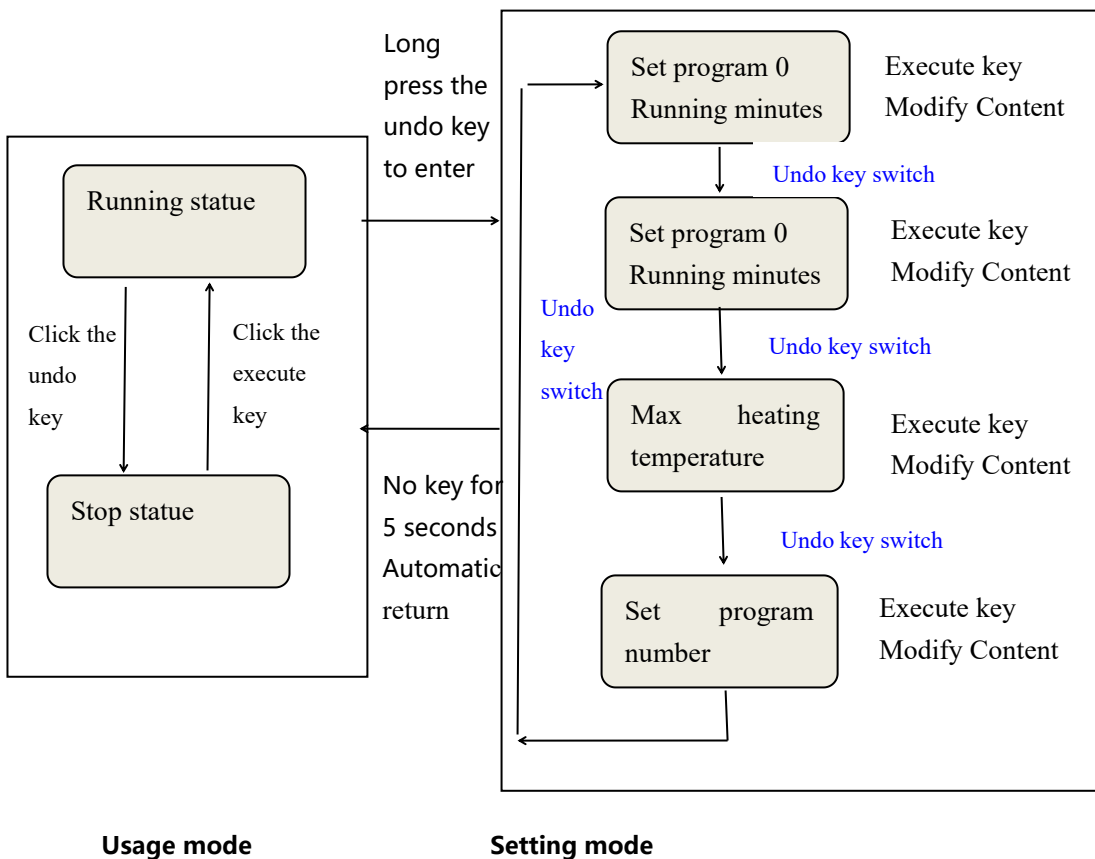
Note: in order to ensure sufficient glue pressing, the equipment delays heating!

The above figure shows the process of one unit. This equipment is equipped with two groups of independent control units, and each unit works independently. The working and setting methods are the same.

When the equipment is running, the 3-digit nixie tube on the display panel displays the running state. During normal operation, the animation of ring flashing in turn is displayed, and the 4-digit nixie tube displays the running time or countdown time (the 3 sets of programs are different). When the equipment is in standby, the display panel displays the real-time temperature of the 3-digit nixie tube display box, and the 4-digit nixie tube displays the countdown time or zero (the 3 sets of programs are different).

Set parameters

The equipment operates by two keys:
 The execution key and the operation key.
 The operation flow chart is as follows:

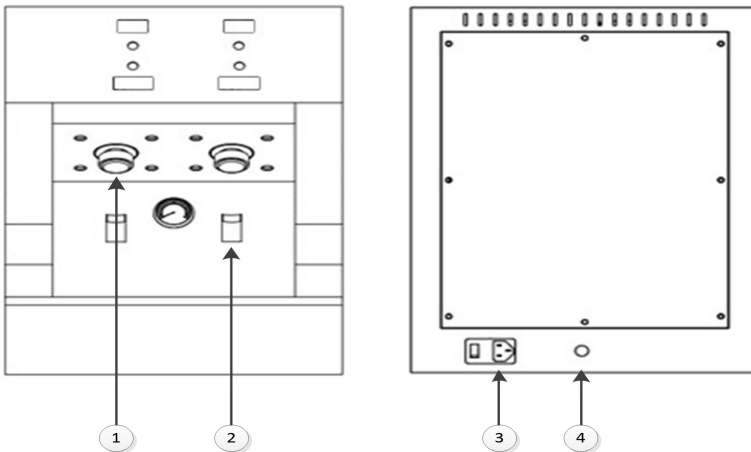


Note: This equipment integrates 3 sets of internal programs, corresponding to program codes: No. 0, No. 1 and No. 2.

Program 0 is a custom program, which can set the heating duration, minutes, seconds less than minutes, and the maximum temperature.

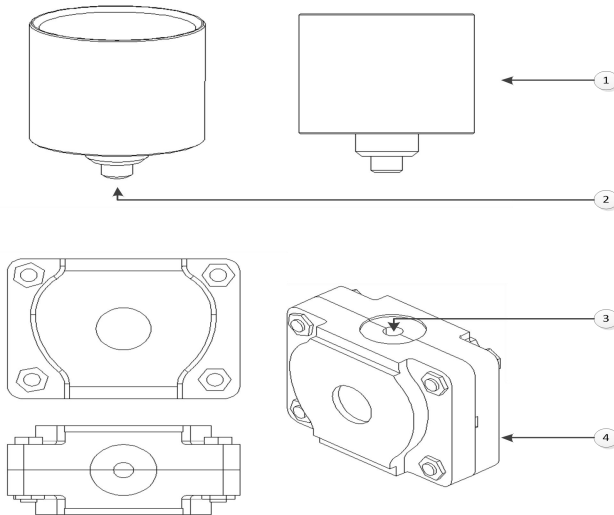
Program 1 and program 2 are customized programs, and parameters cannot be set. Procedure 1 is applicable to BPS capsules, and procedure 2 is applicable to non broken glue. After entering the setting mode, switch the setting object through the undo key. The last parameter is the program code parameter. You can switch the program number by pressing the key repeatedly. Save it inside the device after automatic exit.

Equipment interface



- (1) Glue pressing pusher (2) support seat
(3) power switch (4) air inlet

Equipment Parts



- (1) guide nozzle (2) rubber barrel
(3) rubber inlet (4) type box

Note: BPS capsule needs to be customized with a special box, and the use method is the same.

Security information

Warning: it is strictly forbidden to disassemble the box of this equipment and connect the circuit of this equipment without permission!

Matters needing attention

1. The time and pressure have been set when the machine leaves the factory.
 2. Ensure that the accessories are installed in place during each glue pressing.
 3. The rubber barrel cannot be filled with resin.
- The power supply must be effectively grounded.