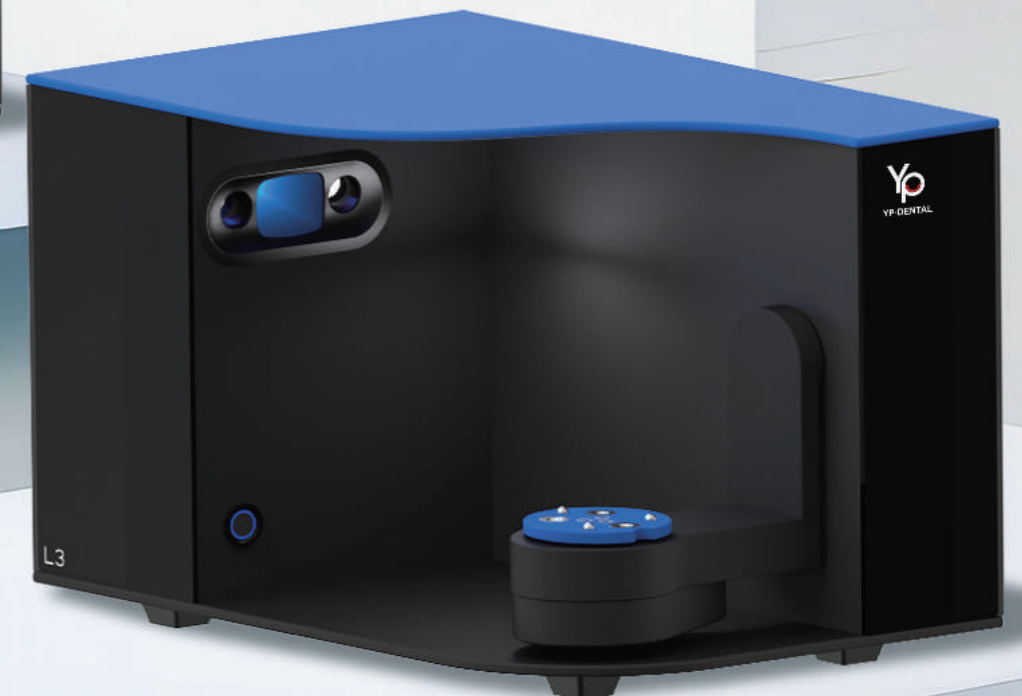
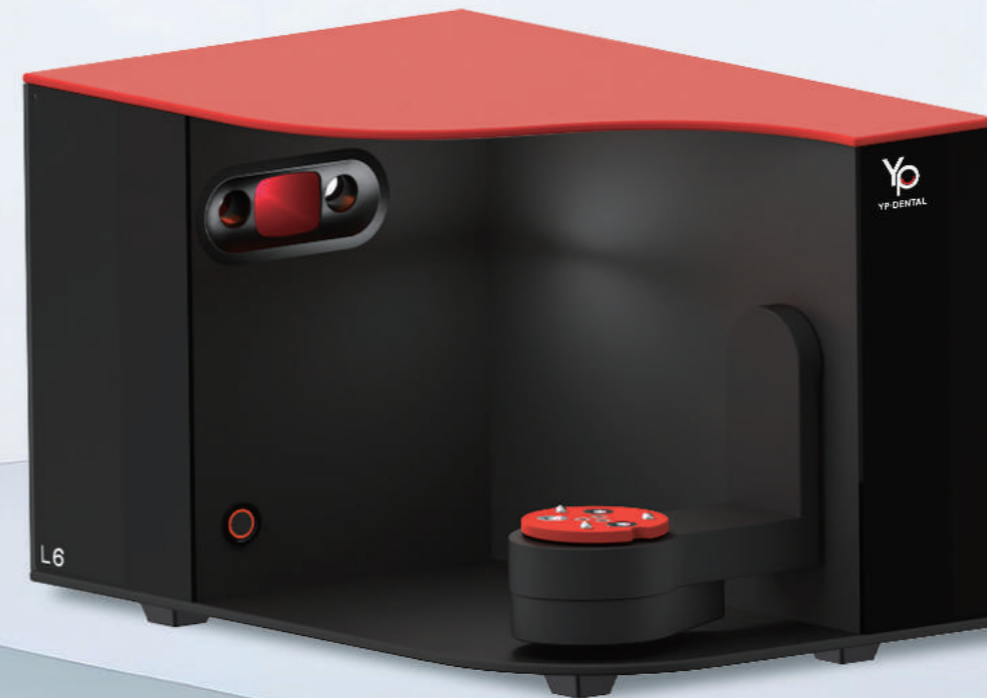




## Desktop 3D scanner



**Anyang Yingpai Dental Material Co., LTD**

Web: <https://ypdental.com>

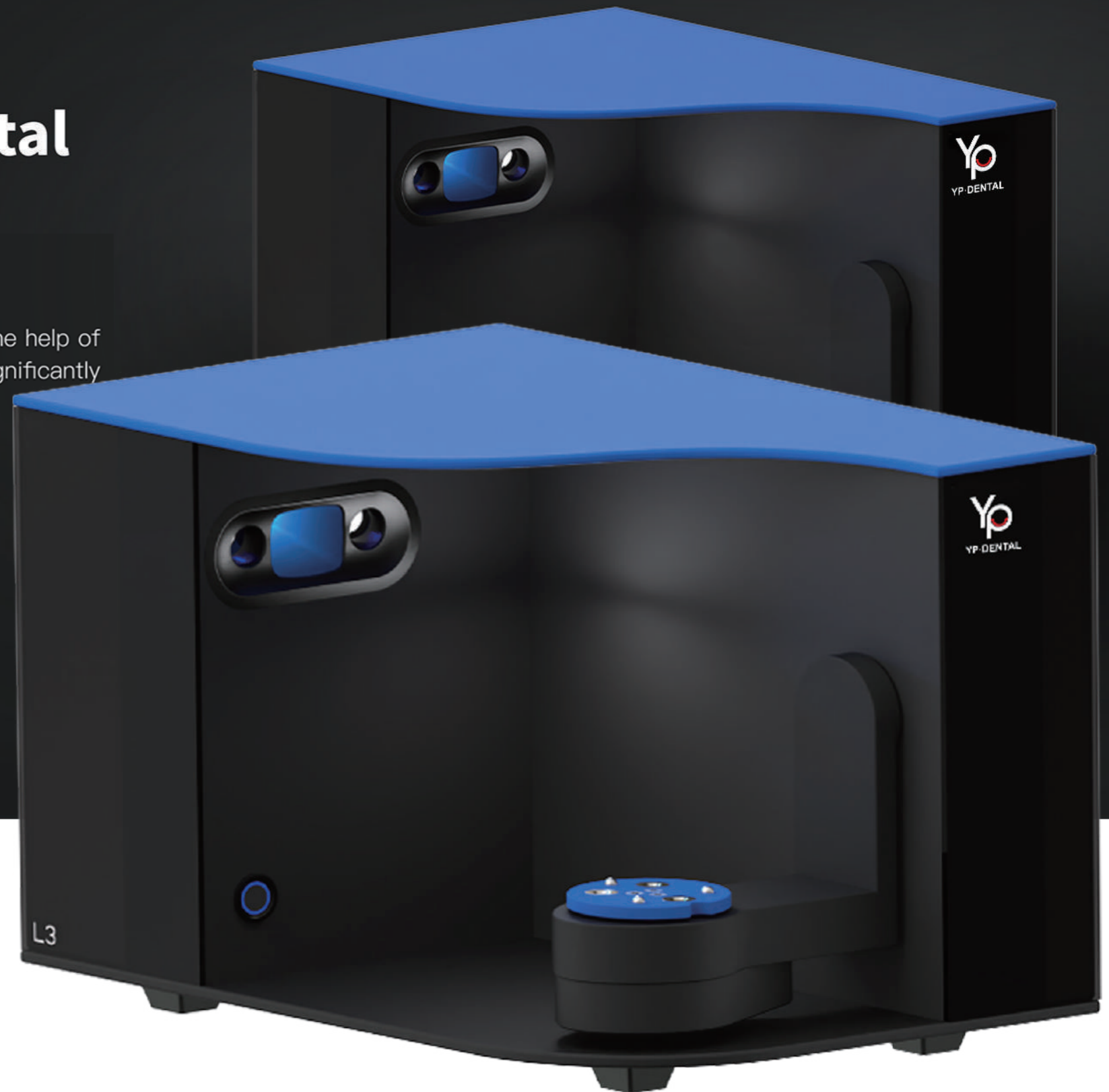
E-mail: [business@ypdental.com](mailto:business@ypdental.com)

Add: Shangguan Town, Hua County, Henan province,  
China (Mainland)

# L3 - Best Value Of Digital Dental

## Dental Lab 3D Scanner L Series

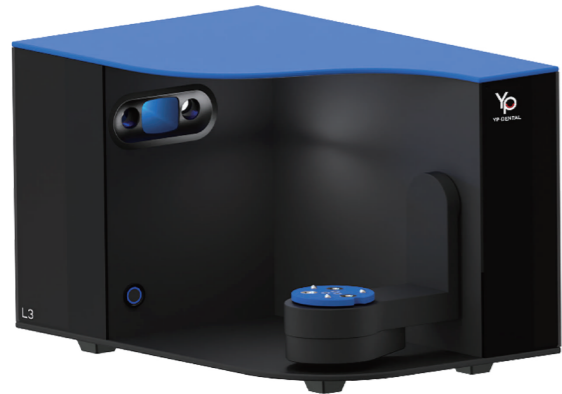
- ▶ All metal body, ensure the stability and durability of the equipment. With the help of powerful intelligent algorithms and software, the work efficiency is significantly improved while the accuracy is satisfied.



YP-DENTAL

# Why YP L-series?

It's your first choice



## Humanized design

Semi-open structure, prevent interference, convenient operation; The button is positioned in the front for easy switching.



## Open system

Support STL PLY, OBJ data formats; Compatible with mainstream CAD software



## Most cost-efficient

Do more with less.  
The first choice to get a scanner.



## Wide application

Restorations orthodontics and other scenarios. Support stone, impression, wax, texture, articulator and other types.



## Professional team

A senior R&D team with more than 10 years of dental industry experience.



## Super performance

Fast speed and high precision.  
Almost no post processing time.

## Fast scanning

**5s**

Occlusion

**11s**

Full arch

**27s**

Impression

**12s**

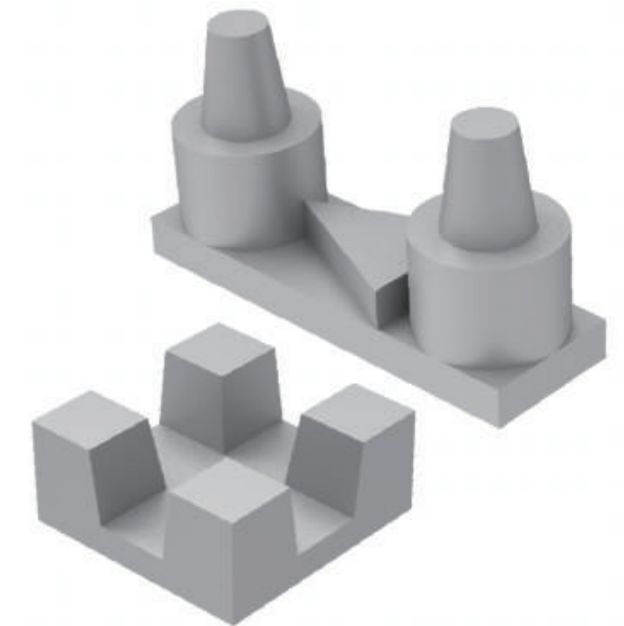
1-4 dies

**20s**

5-8 dies

## High precision

According to the ISO-12836 test sample evaluation procedure, the equipment accuracy was obtained: L3:  $\leq 7\mu\text{m}$ , L6:  $\leq 5\mu\text{m}$ .



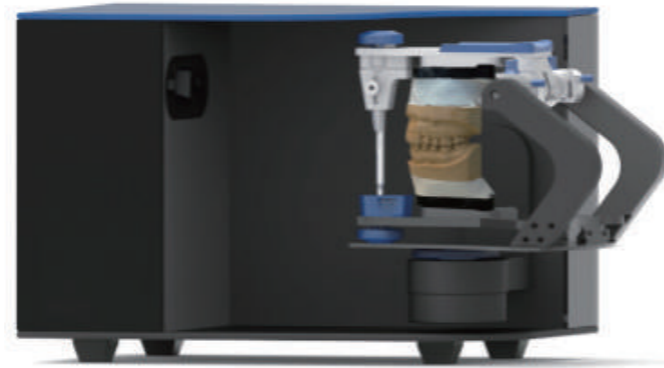
## Excellent details

The 2\*3.0MP high pixel camera allows L6 to have more excellent details and scanning performance, comparable to other brands of 5.0MP pixel products



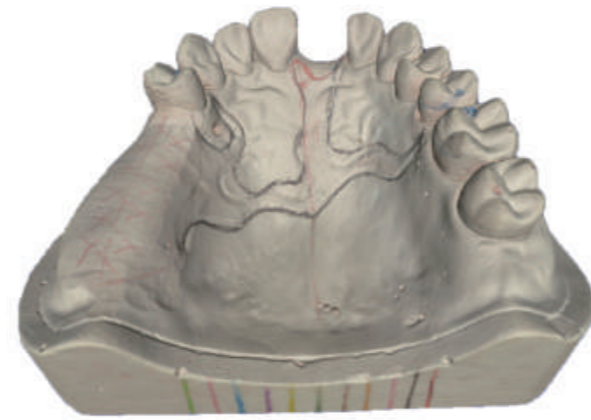
## Articulator scanning

The articulator scanning mode supports multiple types of articulator scanning, supports static and dynamic scanning switching of the articulator, and meets a variety of scanning needs. The dynamic articulator scanning mode scans the entire buccal surface occlusion to improve the accuracy of alignment.



## True color texture

With the help of color restoration technology, L3 can obtain high saturation and high color brightness of the true model color acquisition by using the mono camera, and capturing every inch of color details, making the model more realistic.



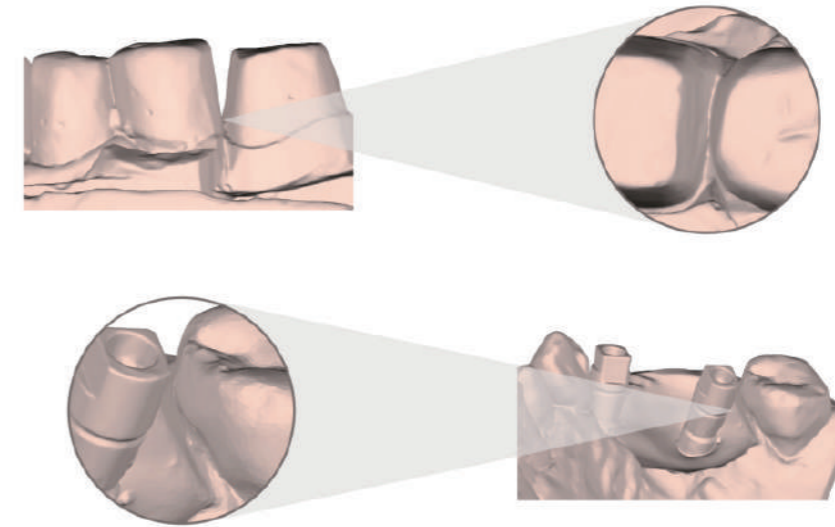
## Flexible workflow

The brand-new software interface covers various common tools, the process can be switched freely, and the operation is simple and convenient.



## Intelligently add scan

The intelligent scanning mode of L series can adjust the scanning angle according to the hole area. With the help of multi-mesh hybrid 3D reconstruction algorithm, the missing areas of data were scanned better and more completely, and the efficiency of supplementary scanning and the integrity of model data were improved.



## Various scan types

Support stone, impression, wax, texture, articulator and other types.

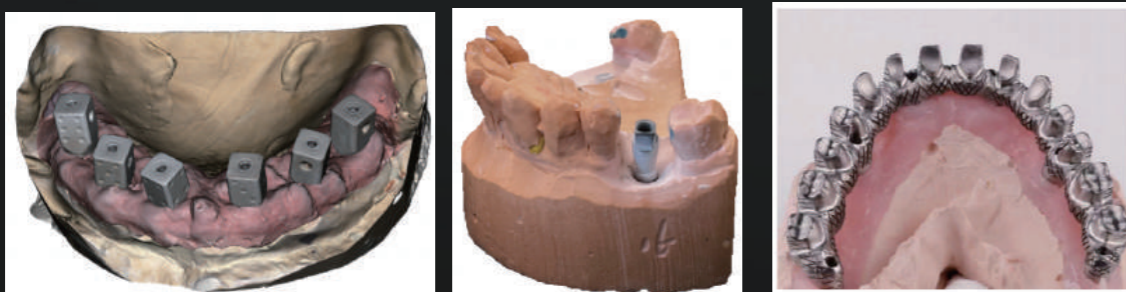




# L6 - Professional Implant Scanner

## Dental Lab 3D Scanner L Series

- ▶ The high pixel camera makes the L6 more accurate, which can easily capture the edge details of the abutment and the characteristics of the scanning. It can be widely used in abutment, scanbody, bridges and other common implant types, making it more professional.



# Z5 - Silent Lightning More Than Speed

## Dental Lab 3D Scanner Z Series

- ▶ A leap into a new era of desktop scanning. With its sleek, lighter design, the Z5 revolutionizes your scanning experience. Thanks to an advanced control system, we've doubled the scanning speed and boosted efficiency by at least 50%. Transition to Z5 for an unparalleled scanning experience that distinguishes your work.



# Z-series



## Fastest scanning speed

100% increase in scanning speed  
50% increase in scanning efficiency



## Speed upgrade

Full arch:9s  
Full arch impression:19s



## Smooth & efficient

Scanning is very smooth  
Extremely silky scanning process  
Doubling the efficiency



## Hardware upgrade

Upgraded overall appearance  
Using an open structure  
Making it smaller and lighter

Category	Z5
Camera resolution	2*2.4MP
Accuracy	≤6μm(ISO12836)
Full arch scan speed	9s
Full arch impression scan speed	19s
Scan area	96*82*60mm
Dimension	393*271*264mm
Weight	6kg

# Advantages

01

## Whole functions & flexible workflow

- Support various scan mode&model types
- Support dynamic & static articulator scan
- Switch the workflow freely
- Support articulator transfer and virtual simulation on EXOCAD

04

## Fast and less time for post-process

- Fast and smooth scanning
- Less post-processing time
- At least 45% efficiency increased

02

## No need for physical dongle

- Electronic authorization and no need to send physical dongle
- Never have to worry about losing or damaging your dongle

05

## Very stable & less problem

- Sold over one year and no broken issues
- Very few problems need to solve
- Almost all clients are very happy to use it

03

## Excellent and timely service

- The professional team provide the professional service timely
- No need to worry there is no service or technician

06

## Excellent technology rapid updates and iterations

- Always make the excellent technology to our partner and clients
- Always make the best products under the requirement of market and clients

••

# Technical Parameters

category	L3	L6	Z5
Camera	2*1.3MP	2*3.0MP	2*2.4MP
Accuracy	≤7μm(ISO12836)	≤5μm(ISO12836)	≤6μm(ISO12836)
Full Arch	11s	13s	9s
Full Arch Impression	27s	29s	19S
Scan Area	106*84*60mm	94*89*60mm	96*82*60mm
Output Format	STL、PLY、OBJ		STL、PLY、OBJ
Light Source	Blue Light		Blue Light
Texture scanning	True colour scanning	True colour scanning	
Dimension	393*271*274mm		393*271*264mm
Weight	9kg	6kg	
Power Supply	DC 24V		DC 24V
Interface	USB 3.0		USB 3.0
Articulator Scan	Dynamic / static; support articulator transfer		

## DIGITAL DENTAL SOLUTIONS

### L-Series & Z-Series lab scanner

